

# 844 R 3 PH



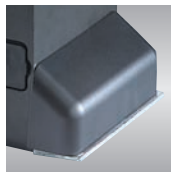
for commercial and industrial sliding gates  
with max weight of 2.200 kg (Z12)



■ Cover



■ Release device  
with customised  
key



■ Screw cover



■ Base in  
pressure cast  
aluminium with  
cataphoresis  
treatment

## ■ Ideal for commercial or industrial gates

The 844 gearmotor was designed to move the heaviest commercial or industrial gates in the simplest, most convenient way.

## ■ Total safety

The special twin-disk anti-crushing clutch, in oil bath, enables torque adjustment from 0 to 62 Nm. As the gearmotor is non reversing, no electric locks need be installed and, in the event of power failure, the key-operated release device makes it possible to open and close the gate manually.

## ■ Long life

Constant, complete oil-bath lubrication of mechanical components plus assembly in a high resistance pressure-cast aluminium body ensure a very long life.

## ■ Dedicated electronics

The 844 R 3 PH gearmotor can be controlled by a dedicated control board with microprocessor, known as 844T. It integrates the contactors and has an electronic braking device ensuring immediate gate stop.

### SPECIFICATIONS

Non-reversing screw gearmotor • Gate maximum weight 2.200 Kg (Z12)/1.600 Kg (Z16) • Gate speed 7.2 m/min (Z12)/9.5 m/min (Z16) • Use frequency max. 70% • Max torque 62 Nm • Electric motor power supply 400 Vac (3PH) (+6% -10%) - 50 (60) Hz • Electric motor power 950 W • Operating ambient temperature -20°C +55°C • Protection class IP 44 • Lever operated release device with coded key • Inductive limit-switch • Lower and upper half-body in pressure cast aluminium with cataphoresis treatment • Twin-disk clutch in oil-bath • Opening/closing force adjustable by hexagonal key • Galvanised foundation plate with side and height adjustment (optional) • Dimensions (L x W x H) 275x191x397 (mm) • Cover in ABS

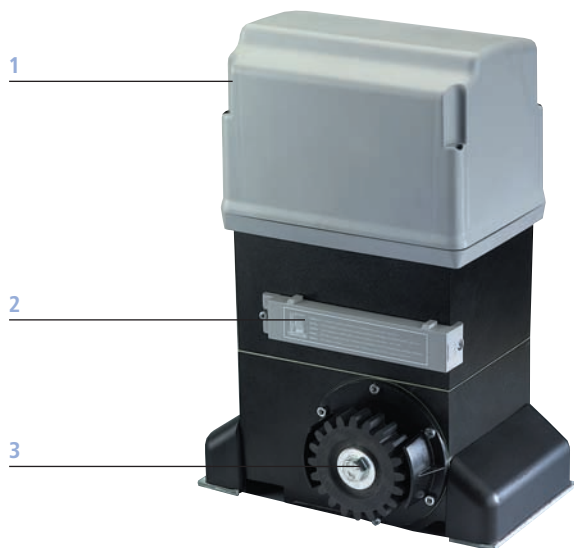
### 844 T control board

Control board with with limit-switch inputs for controlling three-phase gearmotors for sliding gates • Power contactors • Motor max load of 1.3 KW • 24 Vdc - 500 mA max. output for accessories • Microprocessor control • 2 protection fuses (motor/accessories) • Inputs status signalling LEDs • Connector for card receiver/decoding cards • Separate high and low voltage terminal boards • Inputs status signalling LEDs • Programming Dip Switches • Electronic braking device • Automatic (A1-A2-S1-S2), semi-automatic (E1-E2) and deadman (B-C) function logics • Two logics for safety devices (Dip Switches) • Pause times in selection range of 5 s to 180 s (Dip Switches) • Selectable 5 s pre-flashing (Dip Switch) • Inputs: closing safety devices, stop push-button, total opening push-button, partial opening/closing push-button, limit-switch • Outputs: power supply for accessories, power supply for motor, flashing lamp and indicator-light.

# 844 R 3PH

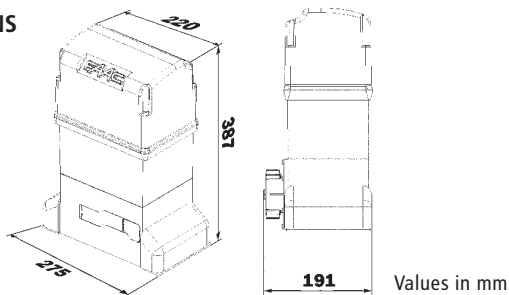


marka.bo.it

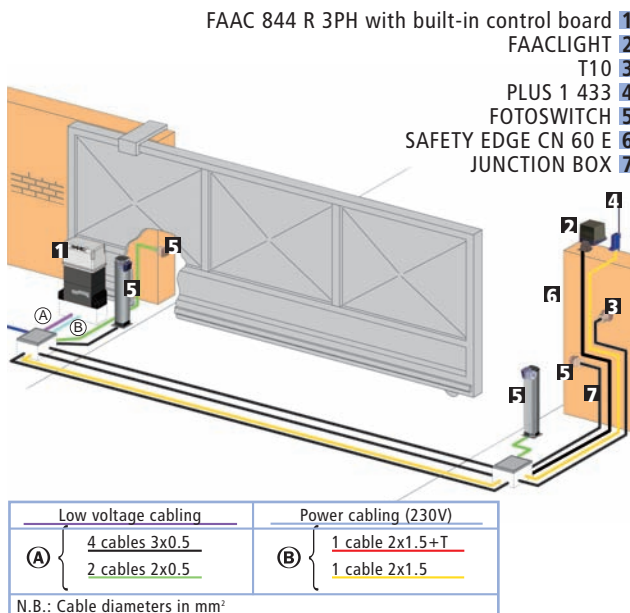


- 1 Cover in ABS
- 2 Inductive limit-switch
- 3 Pinion

## DIMENSIONS



## INSTALLATION DIAGRAM SPECIMEN



Technical specifications	844 R 3 PH
Power supply	400 Vac (3ph)(+6%-10%) 50 (60) Hz
Absorbed power	950 W
Absorbed current	2.5 A
Motor rotation speed	1.400 rpm
Reduction ratio	1:30
Operating ambient temperature	-20°C - +55°C
Weight with oil	15 kg
Protection class	IP 44
Type of oil	FAAC OIL XD 220
Gate speed	9.5 m/min (Z16)/7.2 m/min (Z12)
Max torque	62 Nm
Limit-switch	Inductive with plate
Clutch	Twin disk in oil-bath
Protective treatment	Cataphoresis

Specifications of 844 T control board (remote installation)	
Power supply	230 Vac 3ph (+6% -10%) 60 Hz 400 Vac 3ph+N (+6% -10%) 60 Hz
Motor maximum load	1300 W
Accessories output	24 Vdc 500 mA max
Operating ambient temperature	-20°C ÷ +55°C
Power supply to indicator-light	24 Vac (5W max)
Two protection fuses	6,3 A transformer 1,6 A accessories
Safety timer	255 seconds
Motor braking	fixed

**Inputs** - Open, partially Open, stop, closing safety devices, limit-switch  
**Outputs** - indicator-light, flashing lamp, motor, 24 Vdc power supply for accessories  
**Programming** - Pause time (5/10/15/30/60/120/180 sec.), logics A1/A2/S1/S2/E1/E2/B/C, pre-flashing

Model	Use		Control unit
	Max weight (kg)	Use frequency (cycles/hour)	
844 R 3PH	2.200 (Z12) 1.600 (Z16)	70	Not included



FAAC S.p.A. Via Benini, 1  
 40069 Zola Predosa - Bologna (Italy)  
 tel. +39 051 61724 - fax +39 051 758518  
 www.faacgroup.com



908357004 - Rev. 10 - COOPIT - 04/2008 - The descriptions and illustrations contained in the present brochure are not binding. FAAC reserve the right to undertake product technical modifications without prior notice.